



ABERDEEN ASSET MANAGEMENT 2013/14 FARR 40 AUSTRALIAN CHAMPIONSHIP – JOHN CALVERT-JONES TROPHY

18 – 22 February 2014

The Royal Yacht Club of Tasmania, Hobart Australia

Sailing Instructions

1. **Rules**
 - 1.1 This Regatta will be governed by:
 - 1.1.1 The rules as defined in the 2013-2016 Racing Rules of Sailing (RRS) of the International Sailing Federation
 - 1.1.2 The rules and regulations of the Farr 40 One Design Class
 - 1.1.3 The prescriptions and special regulations of Yachting Australia
 - 1.2 Boats shall comply with the Yachting Australia Special Regulations Part 1 for Category 7.
 - 1.3 Remove the second sentence of RRS 30.2 and replace with the following: *“If a boat breaks this rule and is identified she shall receive, without a hearing, a 10% scoring penalty calculated as stated in rule 44.3(c)”*.
 - 1.4 Delete the first and second sentences of RRS 44.1 and substitute the following:
“A boat may take a One-Turn Penalty, consisting of one tack and one gybe, when she may have broken a rule of Part 2, Rule 31 or Rule 42 while racing. However, if a boat may have broken a rule of Part 2 within the zone of a rounding mark or finish mark, the penalty that may be taken is a Two-Turns Penalty”.
 - 1.5 The maximum amount of drinkable liquid aboard each boat shall not exceed six (6) litres per person, per day. This liquid is included in the restrictions for movable ballast in RRS 51.
 - 1.6 Video, data or photographs taken from any source shall not be used as evidence at protest hearings. This changes RRS 63.6.
2. **Notices to Competitors**
 - 2.1 Notices to competitors will be posted on the Official Notice Board located on the South East corner of the Royal Yacht Club of Tasmania (RYCT).
 - 2.2 The Race Committee may broadcast race information on VHF Channel 15 before and during each race. Failure of such communication to be given or received, or the order in which OCS calls are broadcast, shall not be grounds for redress, except when a request for redress under this instruction is initiated by the Race Committee or Jury. This changes RRS 62.1.
3. **Changes to Sailing Instructions**

Changes to the schedule will be posted by 2000hrs on the day before they will take effect and shall be approved by the Class Administrator. Other changes will be posted before 0900hrs on the day they take effect.

4. Signals Made Ashore

4.1 Signals made ashore will be displayed on the official flagstaff at the RYCT.

4.2 The Warning Signal will not be made less than 45 minutes after flag AP is lowered ashore. This changes RRS Race Signals AP

5. Schedule of Events

5.1

Date	Time	Event
Tue 18 Feb 2014	1530 – 1630	Registration and Weigh-In
	1930	Owners' Reception
Wed 19 Feb 2014	0830 – 0930	Registration and Weigh-In
	0930	Skipper/Tactician/PRO Briefing
	1100	Racing Commences – Up to 4 races
Thu 20 Feb 2014	1100	Racing Commences – Up to 4 races
Fri 21 Feb 2014	1100	Racing Commences – Up to 4 races
	1700	Aberdeen Dock Party
	1800	Aberdeen BBQ
Sat 22 Feb 2014	1100	Racing Commences – Up to 4 races
	After racing	Trophy Presentation

5.2 The initial warning signal for racing each day will not be made before 1100hrs; however, no warning signal will be made after 1500hrs on the last scheduled day of racing.

5.3 Races will be conducted 'back-to-back' and races subsequent to the first race of the day will be started as soon as practicable after the completion of the previous race.

6. Courses

6.1 The diagram in Attachment 1 shows the course, the order in which marks are to be passed, and the side on which each mark is to be left.

6.2 A board displaying the approximate compass bearing may be displayed by the Race Committee Boat.

7. Marks

7.1 Mark 1, 1a and the Gate marks will be yellow inflatable buoys with Aberdeen Asset Management branding.

7.2 The Starting/Finishing mark will be an orange inflatable mark.

7.3 Marks used in a change of course referred to in SI 10 will be orange with a black stripe inflatables.

8. The Start

8.1 The starting line will be between a staff displaying an orange flag on the Race Committee Boat and the course side of the Starting/Finishing mark as described in SI 7.2.

8.2 Class flag will be the Farr 40 Class Flag.

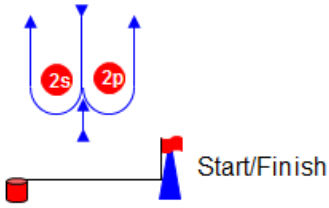
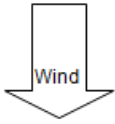
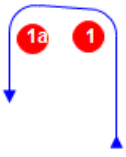
8.3 A boat starting later than five (5) minutes after her starting signal will be scored Did Not Start without a hearing. This changes rule A4.

9. Finish

The finishing line will be between the staff displaying an orange flag on the Race Committee Boat and the course side of the Starting / Finishing mark as described in SI 7.2.

10. **Change of the Next Leg of the Course**
To change the next leg of the course, the race committee will lay a new mark (or move the finishing line) and remove the original mark as soon as practicable. When in a subsequent change a new mark is replaced, it will be replaced by an original mark.
11. **Time Limit**
- 11.1 The time limit for each race shall be 90 minutes.
- 11.2 Boats failing to finish within 30 minutes after the first boat sails the course and finishes will be scored points for the finishing place equal to the number of boats that finished that race plus 2. This changes RRS 35 and A4.
12. **Protests and Requests for Redress**
- 12.1 The protest time limit is 60 minutes after the last boat finishes in the last race of the day.
- 12.2 The protest time limit for sailor classification is 60 minutes after the last boat finishes in the last race of Day 1.
- 12.3 Notices will be posted within 30 minutes after expiration of the protest time limit to inform competitors of hearings in which they are parties or named as witnesses. Hearings will be held in the jury room at RYCT.
- 12.4 The penalty, if any, for any infringement of the rules (including the Class Rules and YA Special Regulations, Category 7) other than RRS Part 2 is at the sole discretion of the Jury in consultation with the Class representative, and may be other than disqualification. This changes RRS 64.1.
- 12.5 On the last day of the regatta a request for reopening a hearing shall be delivered:
- a) within the protest time limit if the party requesting reopening was informed of the decision on the previous day;
 - b) no later than thirty minutes after the party requesting reopening was informed of the decision on that day. This changes RRS 66.
- 12.6 Decisions of the jury will be final as provided in RRS 70.5.
13. **Flags and Decals On Boats**
- 13.1 Materials will be provided to each boat at registration. Signage is to be displayed from no later than the close of Registration on 15 February 2014 until 1600 hours on Saturday 22 February 2014.
14. **Scoring**
- 14.1 Six (6) races are required to be completed to constitute a series.
- 14.2 There will be a maximum of sixteen (16) races.
- 14.3 Each yacht's score shall be the sum of all her races (no discards).
15. **Prizes**
Refer to Notice of Race 13
16. **Support Boats**
Refer to Notice of Race 15
17. **Haul-Out Restrictions**
Refer to Notice of Race 16
18. **Disclaimer Of Liability**
Refer to Notice of Race 20

Attachment 1: Course



Course Marks 1 and 1a to be left to Port

Course	Marks 1 and 1a to be left to Port
1	Start – 1 – 1a – Finish
2	Start – 1 – 1a – 2s/p (Gate) – 1 – 1a -- Finish
3	Start – 1 – 1a – 2s/p (Gate) – 1 – 1a – 2s/p (Gate) – 1 – 1a – Finish