



2018/19 FARR 40 AUSTRALIAN OPEN SERIES

ONE DESIGN TROPHY: 19 & 20 JANUARY 2019

MIDDLE HARBOUR YACHT CLUB

SAILING INSTRUCTIONS



1. RULES

- 1.1 This Regatta will be governed by the rules as defined in *The Racing Rules of Sailing* (RRS) and the prescriptions and Special Regulations of Australian Sailing.
- 1.2 Yachts shall comply with the 2017-2020 Australian Sailing Special Regulations Category 4.
- 1.3 Farr 40 Class rules will apply.
- 1.4 Racing rules will be changed as follows:
 - a) Remove the second sentence of RRS 30.2 and replace with the following: *"If a boat breaks this rule and is identified, she shall receive, without a hearing, a 10% scoring penalty calculated as stated in rule 44.3 (c)"*.
 - b) Delete the first and second sentences of RRS 44.1 and substitute the following:
"A boat may take a One-Turn Penalty, consisting of one tack and one gybe, when she may have broken a rule of Part 2, Rule 31, or Rule 42 while racing. However, if a boat may have broken a rule of Part 2 within the zone of a rounding mark or finishing mark, the penalty that may be taken is a Two-Turns Penalty."
 - c) The maximum amount of drinkable liquid aboard each boat shall not exceed six litres per person per day. This liquid is included in the restrictions for movable ballast in RRS 51.
 - d) Video, data and/or photographs taken from any source shall not be used as evidence at protest hearings. This changes RRS 63.6.
 - e) Except on a beat to windward, the boats crew may pull in any sail any number of times in order to initiate or to maintain surfing or planing.
 - f) Where there is a conflict with the Notice of Race, these Sailing Instructions shall prevail. This changes RRS63.7.

2. NON-COMPETING CLASS REPRESENTATIVE

Jennie Hughes is the Farr 40 Class Administrator.

3. NOTICES TO COMPETITORS

- 3.1 Notices to competitors will be posted on the official notice board(s) located outside the Middle Harbour Yacht Club Sailing Office.

- 3.2 The Race Committee may broadcast race information on VHF 72 (International) before and during each race. Failure of such communication to be given or received, or the order in which OCS calls are broadcast, shall not be grounds for redress, except when a request for redress under this instruction is initiated by the Race Committee or Jury. This changes RRS 62.1.

4. CHANGES TO SAILING INSTRUCTIONS

- 4.1 Changes to the schedule will be posted by 2000 on the day before they will take effect and shall be approved by the Class representative. Other changes will be posted before 0900hrs on the day they take effect.
- 4.2 Changes to the Sailing Instructions made afloat will be indicated by the display of Code Flag 3rd Substitute accompanied by two sound signals. The change may be communicated either orally or in writing.

5. SIGNALS MADE ASHORE

- 5.1 Signals made ashore will be displayed on the flagpole adjacent to the MHYC Start Tower.
- 5.2 When flag AP is displayed ashore, '1 minute' is replaced with 'not less than 60 minutes' in the race signal AP.
- 5.3 When flag Y is displayed ashore, rule 40 applies at all times while afloat. This changes the Part 4 preamble.

6. RACING AREA

- 6.1 **Attachment A** shows the location of racing areas.
- 6.2 The racing area will be on the waters of Port Jackson and the Tasman Sea and will be indicated by a Notice posted by 0900 hrs on the Official Notice Board each day.

7. SCHEDULE

- See NoR 6.
- 7.2 The Race Committee will conduct as many races as practical on each scheduled day of racing, up to a maximum of eight (8) races for the Series. No Warning Signal will be made after 1500 hours on the last scheduled day of racing.



2018/19 FARR 40 AUSTRALIAN OPEN SERIES

ONE DESIGN TROPHY: 19 & 20 JANUARY 2019

MIDDLE HARBOUR YACHT CLUB

SAILING INSTRUCTIONS



7.3 After consultation, the Race Committee may modify the above programme according to prevailing weather conditions and/or other unforeseen circumstances.

8. COURSES

8.1 The diagrams in **Attachment B** show the courses, including the approximate angles between legs, the order in which marks are to be passed, and the side on which each mark is to be left.

8.2 No later than the warning signal, the race committee signal boat will display the approximate compass bearing of the first leg.

8.3 In the event that either 2s or 2p is not in place, boats shall round the existing leeward mark to port.

8.4 In the event that Mark 1a is not in place, boats shall round Mark 1 to port and proceed to the gate or finish.

9. MARKS

9.1 For all courses

a) Marks 1, 2s, and 2p shall be Orange Inflatable Buoys.

b) Mark 1a shall be a Yellow Inflatable Buoy.

c) The starting and finishing mark will be a Yellow Inflatable Buoy.

9.2 A race committee boat signalling a change of a leg of the course is a mark as provided in instruction 12.2.

10. THE START

10.1 The starting line will be between a staff displaying an orange flag on the starting mark at the starboard end and the course side of the port-end starting mark.

10.2 A boat starting later than five minutes after her starting signal will be scored "Did Not Start" without a hearing. This changes rules A4 and A5.

11. FINISH

The finishing line will be between a staff displaying a blue flag on the finishing vessel and the course side of the finishing mark.

12. CHANGE OF THE NEXT LEG OF THE COURSE

12.1 To change the next leg of the course, the race committee will move the original mark (or the finishing line) to a new position.

12.2 Except at a gate, boats shall pass between the race committee boat signalling the change of the next leg and the nearby mark, leaving the mark to port and the race committee boat to starboard. This changes rule 28.1.

13. TIME LIMIT

13.1 The target time limit for the first boat to finish each race shall be less than 60 minutes.

13.2 Boats failing to finish within ten minutes after the first boat sails the course and finishes will be scored points for the finishing place equal to the number of boats that finished that race, plus 2, **but not more than the total number of starters**. This changes RRS 35 and A4.

14. PROTESTS AND REQUESTS FOR REDRESS

14.1 Protest forms are available at the Middle Harbour Yacht Club Sailing Office. Protests and requests for redress or reopening shall be delivered within the appropriate time limit.

14.2 The protest time limit is 90 minutes after the last boat has finished the last race of the day or the race committee signals no more racing today, whichever is later.

14.3 Notices will be posted no later than 30 minutes after the protest time limit to inform competitors of hearings in which they are parties or named as witnesses. Hearings will be held in the protest room listed on the protest log beginning at the time posted.

14.4 Notices of protests by the race committee will be posted to inform boats under rule 61.1(b).

14.5 Breaches of instructions 11.2, 18, 21, 22, 23, 24, 25, 26, 27 and 28 will not be grounds for a protest by a boat. This changes rule 60.1(a). Penalties for these breaches may be less than disqualification if the protest committee so decides. The scoring abbreviation for a discretionary penalty imposed under this instruction will be DPI.



2018/19 FARR 40 AUSTRALIAN OPEN SERIES
ONE DESIGN TROPHY: 19 & 20 JANUARY 2019
MIDDLE HARBOUR YACHT CLUB
SAILING INSTRUCTIONS



- 14.6 On the last scheduled day of racing a request for reopening a hearing shall be delivered:
- (a) Within the protest time limit, if the requesting party was informed of the decision on the previous day;
 - (b) No later than 30 minutes after the requesting party was informed of the decision on that day.

This changes rule 66.

- 14.7 On the last scheduled day of racing a request for redress based on a protest committee decision shall be delivered no later than 30 minutes after the decision was posted. This changes rule 62.2.

- 14.8 The penalty, if any for any infringement of the rules (including the Class Rules and AS Special Regulations) is at the sole discretion of the Jury in consultation with the class representative and may be other than disqualification. This changes RRS 64.1

15. EVENT ADVERTISING – Refer NoR 8

16. REGISTRATION - Refer NoR 5

17. MEASUREMENT - Refer NoR 7

18. SCORING - Refer NoR 12

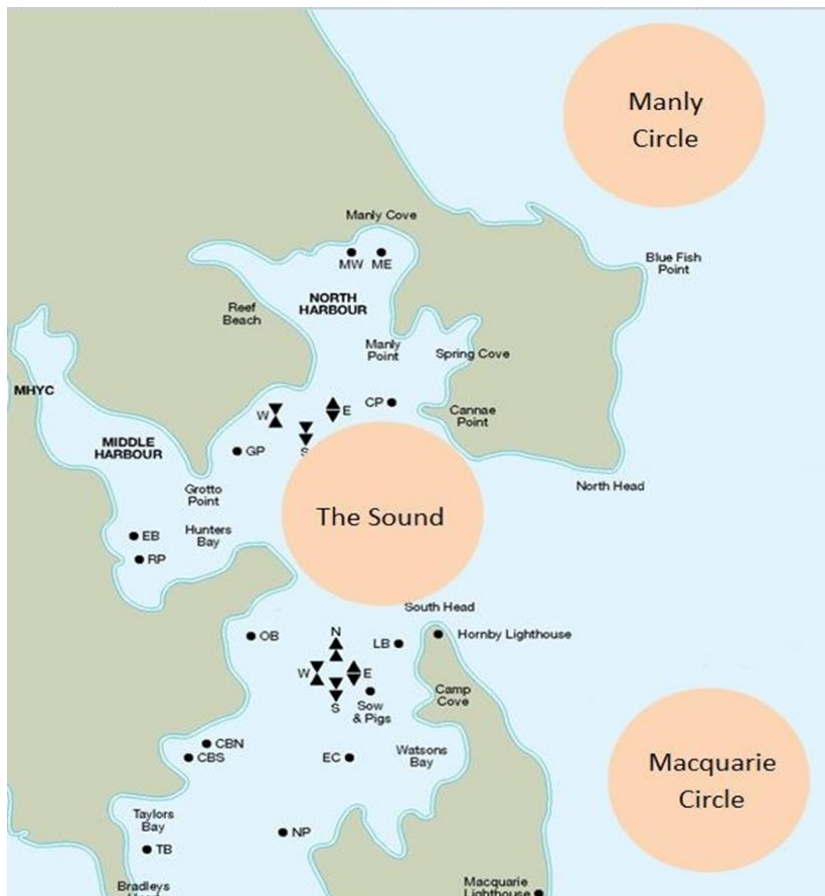
19. PRIZES - Refer NoR 13

20. SUPPORT BOATS - Refer NoR 15

21. HAUL-OUT RESTRICTIONS - Refer NoR 16

22. DISCLAIMER OF LIABILITY - Refer NoR 20

Attachment A – Racing Areas



Attachment B - Courses

Code	Course
W1	Start - 1 - 1a – Finish
W2	Start - 1 - 1a - Gate- 1 - 1a – Finish
W3	Start - 1 - 1a - Gate - 1 - 1a - Gate- 1 - 1a – Finish

